

OVERVIEW OF ELECTRICAL ENERGY IN JANUARY 2009

The purpose of this document is to provide information concerning the operation of the French public transmission network and power system during the past month. The data published are interim figures dated 6 February 2009.

NATIONAL ELECTRICAL CONSUMPTION IN FRANCE

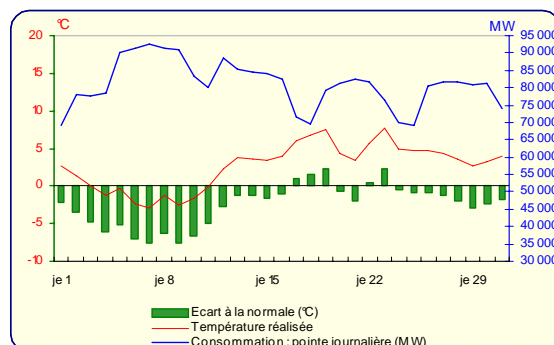
National consumption is the total of all the electrical energy supplied for consumption in France (including Corsica, but not the French Overseas Departments), thermal and hydro generation + imports – exports – pumping, and which have been consumed in the transmission and distribution networks, by the end-users, as well as by losses.

Period	National consumption		Adjusted consumption (*)	
Results in January 2009	54.6	TWh	50.7	TWh
Trend compared with January 2008	↗	9.6%	↘	-2.4%
Trend over last 12 months	↗	3.5%	↗	0.7%

(*) Adjusted for winter and summer climate contingencies and the inclusion of 29 February

Temperature	
Monthly average	2.7 °C
Deviation from normal temperature:	-2.4 °C/norm
Deviation from January 2008:	-4.1 °C

RTE-in house reference drawn up on basis of METEOPFRANCE data



In January 2009, the average monthly temperature was 4.1°C lower than January 2008, resulting in demand 3.7% higher 9.6%. Adjusted for climatic contingencies, monthly demand was down by 2.4%. The proportion of this drop that can be attributed to the cumulative unfavourable calendar effect (one long bank holiday weekend and one extra Saturday), Peak Day Load Shedding (EJP) orders issued over seven days, compared with just one regional EJP order in January 2008, and power cuts caused by the storm of 24 January, can be estimated at approximately 1%. The rate of growth in adjusted consumption over a 12 month sliding period fell from 1.2% at the end of December 2008, to 0.7% at the end of January 2009.

BALANCE OF PHYSICAL ELECTRICAL ENERGY FLOWS ON THE RTE NETWORK

INJECTIONS NET	January 2009 (GWh)	Trend compared with January 2008	
Nuclear generation	43,090	↗	5.3%
Fossil-fuel thermal generation	5,319	↗	22.8%
Renewable sources excl. hydro	113	↗	38.9%
Hydro-electric generation	5,485	↗	1.7%
Total injections	54,007	↗	6.5%

DELIVERIES NET	January 2009 (GWh)	Trend compared with in January 2008	
Physical export balance	2,717	↘	-37.4%
Pumping	722	↘	-9.4%
Distribution networks	43,601	↗	15.5%
Industrial consumers (HVB)	5,618	↘	-15.2%
Total deliveries	52,658	↗	6.4%

In January 2009, extractions by distributors were up by 5.85 TWh compared with January 2008, whilst extractions by industrial consumers were down by 1.0 TWh; pumping was down by 0.1 TWh. The export balance was down by 1.6 TWh. Generation injected into the RTE network was up by 3.3 TWh. Injections from nuclear installations were up by 2.15 TWh, those from hydro-electric plants rose by 0.1 TWh, and those from renewable sources by 0.05 TWh. Conventional fossil-fuel thermal generation injected into the network rose by 1.0 TWh. The physical balance of exchanges remained positive, i.e. France remained an exporter, throughout the month, with the exception of three days (6th, 15th and 29th) and at several points in time over the course of nine days (5th, and from 7th to 14th).

CONSUMPTION AND PHYSICAL EXCHANGES noteworthy data

	January 2009		Last 12 months		Absolute *		
Consumption	Maximum	2,035 GWh	Weds 7	2,035 GWh	07/01/2009	2,035 GWh	07/01/2009
		92,400 MW	Weds 7	92,400 MW	07/01/2009	92,400 MW	07/01/2009
	Minimum	1,486 GWh	Sunday 25	898 GWh	17/08/2008	345 GWh	15/08/1978
		56,003 MW	Thurs 1	31,411 MW	17/08/2008	12,552 MW	15/08/1978
Export balance of physical exchanges	Maximum	202 GWh	Sat 24	298 GWh	08/05/2008	298 GWh	08/05/2008
		10,880 MW	Sat 24	13,746 MW	11/11/2008	13,746 MW	11/11/2008
	Minimum	-30 GWh	Tues 6	-30 GWh	06/01/2009	-95 GWh	02/03/2006
		-3,435 MW	Tues 6	-3,435 MW	06/01/2009	-6,690 MW	02/03/2006

*The minimum values concern the last 30 years (for consumption, except the black-out on 19th December 1978).

THE ELECTRICITY MARKET

CONTRACTUAL ELECTRICITY EXCHANGES WITH FOREIGN COUNTRIES

(These exchanges include all transactions managed by RTE)

EXPORTS	January 2009 (GWh)	Trend compared with January 2008
Belgium	373	↘ -67%
Germany	524	↗ 124%
Switzerland	2,448	↗ 9%
Italy	1,804	↘ -3%
Spain	332	↘ -52%
Great Britain	568	↘ -47%
Total	6,049	↘ -16%

IMPORTS	January 2009 (GWh)	Trend compared with January 2008	
Belgium	505	↗	n.s.*
Germany	1,477	↘	-36%
Switzerland	478	↗	50%
Italy	72	↘	-29%
Spain	442	↗	155%
Great Britain	479	↗	n.s.*
Total	3,453	↗	13%

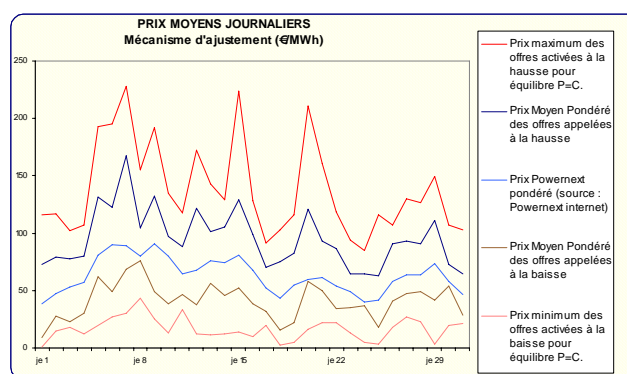
(* In January 2008, the volume of imports for Belgium was 53 GWh, whilst that from Great Britain was 127 GWh.

As of the end of January 2009, some 117 contracts were signed for adhesion to the PTS access rules for imports and exports.

BALANCE RESPONSIBLE ENTITIES – BALANCING MECHANISM

As of the end of January 2009, some 37 Balancing Actors and 146 Balance Responsible Entities (*) were declared.

(* Balance Responsible Entity: any legal entity who is committed to RTE, under a Balance Responsible contract, to settling the costs of the imbalances calculated a posteriori, on behalf of one or more network users attached to its scope. These imbalances result from the difference between all of the supplies and consumption for which it is responsible.



	January 2009 (GWh)	Trend compared with January
Exchanges between Balance Responsible Entities Volume of energy exchanged (via NEBs)	23,663	↘ -1 %
Balancing Mechanism	Total volume of energy activated upward	↗ 118%
	Total volume of energy activated downward	↘ -47%