

OVERVIEW OF ELECTRICAL ENERGY IN MARCH 2009

The purpose of this document is to provide information concerning the operation of the French public transmission network and power system during the past month. The data published are interim figures dated 6 April 2009.

NATIONAL ELECTRICAL CONSUMPTION IN FRANCE

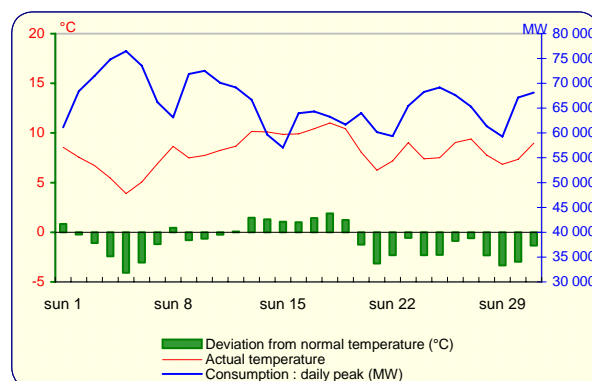
National consumption is the total of all the electrical energy supplied for consumption in France (including Corsica, but not the French Overseas Departments), thermal and hydro generation + imports – exports – pumping, and which have been consumed in the transmission and distribution networks, by the end-users, as well as by losses.

Period	National Consumption		Adjusted Consumption (*)	
Results for March 2009	44,3	TWh	43,2	TWh
Trend compared with March 2008	↘	-4,6%	↘	-3,6%
Trend since 1 st January	↗	2,8%	↘	-2,4%
Trend over last 12 months	↗	2,3%	↔	0,0%

(*)Adjusted for winter and summer climate contingencies and the inclusion of 29 February 2008

Temperature	
Monthly average :	8,1 °C
Deviation from normal temperature :	-0,9 °C/normale
Deviance from March 2008 :	+0,3 °C

RTE-in house reference drawn up on basis of METEOFRANCE data



In March 2009, the average monthly temperature was 0.3°C higher than March 2008, resulting in demand 4.6% lower. Adjusted for climatic contingencies, monthly demand was down by 3.6%. The rate of growth in adjusted consumption over a 12 month sliding period fell from 0.5% at the end of February 2009, to 0.0% at the end of March 2009.

BALANCE OF THE ENERGY PHYSICAL FLOWS ON THE RTE NETWORK

NET INJECTIONS INTO THE RTE NETWORK	March 2009 (GWh)	Trend compared with the same period in 2008	
		March	Since 1 st January
Nuclear generation	35 929	↘ -3,4%	↘ -0,8%
Conventional fossil-fuel thermal generation	3 648	↘ -3,5%	↗ 14,7%
Renewable energy sources but hydro	127	↗ 43,8%	↗ 46,3%
Hydro generation	5 538	↗ 11,9%	↗ 13,0%
Total injections	45 242	↘ -1,7%	↗ 1,9%

NET DELIVERIES AT THE TERMINALS OF THE RTE NETWORK	March 2009 (GWh)	Trend compared with the same period in 2008	
		March	Since 1 st January
Physical balance of trade	4 450	↗ 44,7%	↘ -10,8%
Pumping	604	↘ -19,3%	↘ -11,8%
Distribution networks	33 159	↘ -3,2%	↗ 6,6%
Industrial consumers (HV)	6 060	↘ -12,4%	↘ -14,4%
Total deliveries	44 273	↘ -1,6%	↗ 1,9%

In March 2009, extractions by distributors were down by 1.1 TWh compared with March 2008, whilst extractions by industrial consumers were down by 0.85 TWh ; pumping was down by 0.15 TWh. The export balance rose by 1.35 TWh. Generation injected into the RTE network was down by 0.8 TWh. Injections from nuclear installations were down by 1.3 TWh, those from thermal fossil fuel-fired plants down by 0.15 TWh. Injections from hydro-electric installations were up by 0.6 TWh, those from renewable sources up by 0.05 TWh. The physical balance of exchanges remained positive (exporting) throughout the month.

CONSUMPTION AND PHYSICAL EXCHANGES : noteworthy data

		March 2009		Last 12 month		Absolute *	
Consumption	maximum	1 649 GWh	Thursday 5	2 035 GWh	07/01/2009	2 035 GWh	07/01/2009
		76 467 MW	Thursday 5	92 400 MW	07/01/2009	92 400 MW	07/01/2009
	minimum	1 199 GWh	Sunday 15	898 GWh	17/08/2008	391 GWh	05/08/1979
Export Balance of physical exchanges		43 090 MW	Sunday 15	31 411 MW	17/08/2008	14 099 MW	05/08/1979
	maximum	212 GWh	Saturday 21	298 GWh	08/05/2008	298 GWh	08/05/2008
		12 114 MW	Sunday 29	13 746 MW	11/11/2008	13 746 MW	11/11/2008
	minimum	69 GWh	Thursday 12	-30 GWh	06/01/2009	-95 GWh	02/03/2006
		555 MW	Thursday 12	- 3 435 MW	06/01/2009	- 6 690 MW	02/03/2006

* The minimum values concern the last 30 years.

THE ELECTRICITY MARKET

CONTRACTUAL ELECTRICITY EXCHANGES WITH FOREIGN COUNTRIES

These exchanges include all transactions managed by RTE.

EXPORTS	March 2009 (GWh)	Trend compared with the same period in 2008	
		March	Since 1 st January
Belgium	420	↘ -68%	↘ -66%
Germany	795	↗ n.s.*	↗ 150%
Switzerland	2 336	↗ 12%	↗ 11%
Italy	1 932	↗ 15%	↗ 4%
Spain	530	↗ 23%	↘ -34%
Great Britain	620	↘ -27%	↘ -41%
Total	6 633	↗ 1%	↘ -10%

IMPORTS	March 2009 (GWh)	Trend compared with the same period in 2008	
		March	Since 1 st January
Belgium	403	↗ n.s.*	↗ n.s.*
Germany	1 149	↘ -58%	↘ -45%
Switzerland	145	↘ -53%	↗ 11%
Italy	10	↘ -92%	↘ -71%
Spain	272	↘ -2%	↗ 95%
Great Britain	278	↗ 151%	↗ 196%
Total	2 257	↘ -38%	↘ -11%

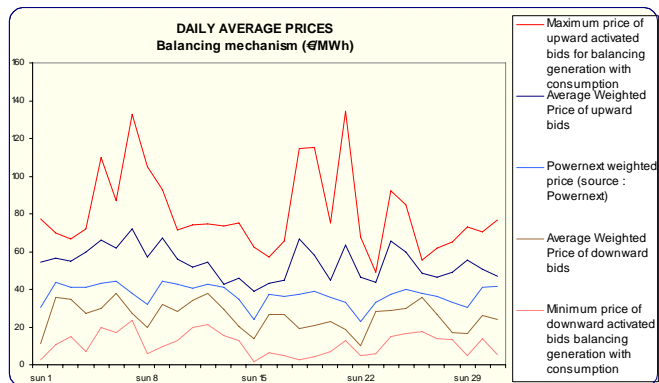
(*) In March 2008, the volume of imports from Belgium was 43 GWh, whilst the volume of exports to Germany totalled 173 GWh. Since the beginning of 2009, for Belgium, the volume of imports amounts to 1,252 GWh, compared with 153 GWh in 2008

As of the end of March 2009, some 116 contracts were signed for adhesion to the PTS access rules for imports and exports.

BALANCE RESPONSIBLE – BALANCING MECHANISM

As of the end of March 2009, some 39 Balancing Actors and 146 Balance Responsible Entities (*) were declared.

(*) Balance Responsible : any legal person who is committed to RTE, under a Balance Responsible contract, to settling the costs of the imbalances calculated a posteriori, on behalf of one or more network users attached to its scope. These imbalances result from the difference between all of the supplies and consumptions for which it is responsible.



	March 2009 (GWh)	Trend compared with the same period in 2008		
		March	Since 1 st January	
Exchanges between Balance Responsible	Volume of energy exchanged (via NEB)	22 685	↘ -10 %	↘ -7%
Balancing mechanism	Volume of energy activated upward	515	↗ 11%	↗ 79%
	Volume of energy activated downward	302	↗ 59%	↘ -33%

TRANSMISSION NETWORK DEVELOPMENT

In March the following installations entered operational service on the RTE network :

- The 63 kV Benfeld-Sélestat line, in the Bas-Rhin department.
- The 63 kV Lutterbach-Marie Louise line, in the Haut Rhin department.